



ETHNOCARPATHIA ROUTE

Getting to know the folk culture with all your senses, coexisting in perfect symbiosis with the mystical nature of the Carpathians, mental opening and focusing on the rhythm of life of former inhabitants of the Polish-Slovak borderland, who lived in harmony with the rhythm of the seasons, religious holidays and themselves.

Carpathian ethno means flagship spaces, places, objects, people, their creativity and food, while traveling through villages in the valleys, pastoral buildings in mountain meadows, mountain passes, wooden churches and Orthodox churches on the slopes of the mountains, and finally cities where the development of industry competed with culture and now he preserves, nurtures and reveals it to those traveling through the Polish-Slovak borderland. The goal is to absorb the folk culture of the Carpathians with all your senses.

START

Arrival by plane to the Rzeszów-Jasionka airport, transfer by coach to Kombornia for the night.

GPS: 50.1192541, 22.0602627

Day 1



Accommodation

Hotel Dwór Kombornia is one of the best-preserved residential complexes in south-eastern Poland, situated on a 10-hectare estate with a park, vineyard and recreational complex.

Kombornia 1, Korczyna

hotel@dworkombornia.pl

www.dworkombornia.pl



24h reception
GPS: 49.70163609999999, 21.8638444

Kombornia Hotel & SPA

Where to sleep?



Dinner

Dinner at the hotel restaurant, free time.

Kombornia 1, Korczyna

hotel@dworkombornia.pl

www.dworkombornia.pl



24h reception
GPS: 49.70163609999999, 21.8638444

Kombornia Hotel & SPA

Where to sleep?



Tasting

Wine tasting at the Salon of Carpathian Wines in Kombornia Manor, situated on the former Hungarian route, whose cellars were full of Hungarian wine. It is the only place where you can discover the Carpathian wine world.

Kombornia 1, Korczyna

hotel@dworkombornia.pl

www.dworkombornia.pl



24h reception
GPS: 49.70163609999999, 21.8638444

Kombornia Hotel & SPA

Where to sleep?

Day 2



Visiting the 15th-century UNESCO church

Early breakfast at the hotel.
Drive towards Sanok through Haczów.
Visiting the 15th-century UNESCO church - a unique place in the Pogórzany area, one of the largest wooden churches in Europe, approx. 1 hour

Haczów 603, Haczów

parafiahaczow@gmail.com

www: [www: www.parafiahaczow.pl](http://www.parafiahaczow.pl)



Church of Assumption of the Blessed Virgin Mary in Haczów (UNESCO)

What to see?

Tuesday - Sunday 11.00 - 18.00

GPS: 49.6701835, 21.8892191



Visiting the Folk Architecture Museum in Sanok

Transfer to the Museum of Folk Architecture in Sanok - the most important place on the ethnographic map of Podkarpacie, an open-air museum presenting the culture of Boykos, Dolinians, Lemkos and Pogórzans (Aleksandra Rybickiego 3, 38-500 Sanok). MBL guided tour of the open-air museum (sectors: Bojków, Dolinian, Pogórzan and Lemków) and the Galician Market, free time, possibility of buying traditional bread with bear garlic, local products as well as folk handicrafts and crafts (approx. 3.5 hours).

ul. Rybickiego 3, Sanok

kasa@skansensanok.pl

www.skansen.mblsanok.pl

Tuesday - Sunday from 9.00 a.m. to 6.00 p.m.

GPS: 49.574206, 22.207669



Museum of Folk Architecture in Sanok.

What to see?



Spacer on the sanock market

With free time, a walk around Sanok - the historic capital of the Sanok Region, between the Carpathian Foothills and the Bieszczady Mountains (Market Square with historic tenement houses, Castle, Holy Trinity Church, terrace overlooking San, Proziakowania) is planned.

Sanok, Sanok

www.sanok.pl

24h

GPS: 49.55501870000001, 22.2060658



Sanok Market Square with historic tenement houses, the Orthodox Church of St. Trinity

What to see?



Dinner

Lunch at the Chata Starych Znajomych Restaurant - an atmospheric place on the Wooden Architecture Trail, in a historic wooden hut with an ethno-garden, with dishes from Dolinian, Bojków and Lemków cuisine, on the route connecting Sanok with the Bieszczady Mountains.



Old Friends Chata

What to eat?

Zahutyń 281, Sanok

restauracja@chatastarychnajomych.pl

www.chatastarychnajomych.pl

Monday 11: 00-21: 00

Tuesday 10.00am - 9.00pm

Wednesday 10: 00-21: 00

Thursday 10: 00-21: 00

Friday 10: 00-21: 00

Saturday 10: 00-21: 00

Sunday 10:00 am - 9:00 pm

GPS: 49.5272233, 22.2420019



A visit to the Culture Creators Group Gallery

Drive through Zagórz. Then a visit to the Bieszczadzka Cultural Creators Group Gallery - a place for artists and art enthusiasts. It gathers local artists and cultivates the artistic traditions of the region. Presentation of folk and artistic works of the Carpathians (Dolinianie, Bojkowo and Lemkos), tasting local products (honey, bread, cheese, dumplings, proziaki - KGW in Zahutyń).



The Bieszczady Group of Creators of Culture

What to see?

ul. Wolności 25, Zagórz

galeria@bgkt.pl

bgkt.pl

Tuesday - Sunday 10.00 a.m. - 6.00 p.m.

GPS: 49.517451, 22.262193



Accommodation

Drive through Lesko to the Salamandra Hotel - the gate to the Bieszczady Mountains, located on the route, with the original interior of the restaurant in a forest style and a gallery of paintings presenting the Carpathians and their inhabitants. Accommodation, dinner, overnight.



Hotel Salamandra

Where to sleep?

Hoczew 155, Lesko

info@salamandra-hotel.pl

<https://salamandra-hotel.pl/>

24h reception

GPS: 49.4418502, 22.3460272



Visiting the Bojków Museum of Spiritual and Material Culture

Breakfast at the Salamandra Hotel.
Transfer to Myczków (optional short stop at the beekeeping farm in Berezka) to the Boyko Museum of Spiritual and Material Culture - the most important place on the current map of Boyko region, run by an enthusiast of Boyko origin. Gawęda Stanisława Drozd, optional bread baking workshops, approx. 3 hours

Myczków 46, Polańczyk

poczta@muzeumbojkow.pl

<http://muzeumbojkow.pl/>

The museum is open to visitors all year round.
We are open from Tuesday to Saturday from 9:00 am to 5:00 pm
GPS: 49.3797788, 22.4127966



Bojków Museum of Spiritual and Material Culture in Myczków.

What to see?



A visit to the Bojkowska Gallery in Myczków

Purchase of souvenirs and boyish coffee at Galeria Bojkowska.

Myczków 46, Polańczyk

pracowniafigaro@gmail.com

<https://www.facebook.com/rekodzielobieszczadzkie>



Bojkowska Gallery Myczków

What to see?

Tuesday - Saturday 9 a.m. - 5 p.m.
GPS: 49.379935, 22.4127338



Lunch in Polańczyk

Transfer to Polańczyk on the Solina Lagoon.
Lunch in Oberża Zakapior, referring to the Bieszczady zakapiory tradition, with dishes from Boyko and Lemko cuisine as well as live music by local artists.

Zdrojowa 37, Polańczyk

adam.adam@onet.eu

<http://www.zakapior.com/>



Oberża Zakapior in Polańczyk

What to eat?

daily 12:00 - 22:00
GPS: 49.3746473, 22.4373865



Cruise on Lake Solina

Under favorable weather conditions, a boat trip on Lake Solina (approx. 1.5 hours)

In unfavorable weather conditions, come to the Museum in Myczków for workshops conducted by Władysław Bronowski - beekeeping enthusiast from Apiary Bieszczadzka from Berezka near Polańczyk, with a multi-generational tradition (38-610 Polańczyk, Berezka 26a). A story about beekeeping in the Bieszczady Mountains, tasting, purchase of natural honey, approx. 1.5 hours.

, Solina

<http://www.twojebieszczady.net/solina.php>

24h

GPS: 49.3689308, 22.4549418



Solińskie Lake

What to see?



Visiting the Church of St. Paraskeva

Drive along the Bieszczady Loop, on the route: Wołkowyja, Górzanka - the church of St. Paraskeva (visiting a temple with a long and difficult history in Bieszczady, restored and now a Roman Catholic church, with some elements of original equipment from the 18th century)

Górzanka 50, Wołkowyja

kontakt@parafia-gorzanka.pl

<https://parafia-gorzanka.pl/>

Holy Masses

Sunday:

8:00, 11:00

weekdays:

November-March 17:00

April-May 18:00

June-August 19:00

September-October 18:00

GPS: 49.32786680789762, 22.37625540737915

Parish of the Ascension of Jesus in Górzanka

What to see?



Visit of the Oil Mine

The next point on the Bieszczady Loop is the crude oil mine in Czarna Góra. Due to the fact that it is an open mine, sightseeing is possible only from the outside.

ul. Lipowa 38, Gorlice

k.dudek1@o2.pl

<http://www.skansenmagdalena.cba.pl/>



Open-air museum of the oil industry Magdalena

What to see?

May - September: Monday - Friday 9:00 a.m. - 2:00 p.m. and 4:00 p.m. - 7:00 p.m., Saturday 9:00 a.m. - 2:00 p.m.

Sunday - after prior arrangement by phone

October - April: the open-air museum can be visited after prior arrangement by phone, tel. + 48 600 491 470

GPS: 49.30737209999999, 22.6738124

Lutowiska viewing point

One of the most beautiful panoramas of the High Bieszczady can be seen from the village of Lutowiska.

On a large plaque we find a panoramic photo with visible peaks and other geographical points. During the season there is a booth with souvenirs, cheese and other local products.

GPS: 49.2513639, 22.6952648



Lutowiska.

What to see?



Accommodation

Accommodation at the Stanica Chreptiowska Hotel in Lutowiska - a wooden facility whose architecture and design refer to the Deluge by Henryk Sienkiewicz. Dinner consisting of Boyko cuisine, with a view of the Bieszczady Mountains, free time, overnight.

Lutowiska 102, Lutowiska

recepca@chreptiow.pl

<https://chreptiow.pl/>

year-round facility, 24h reception

The hotel day starts at 4:00 p.m. and ends at 11:00 a.m. the next day

GPS: 49.26360529999999, 22.6833203



Kresowa Chreptiów Station

What to see?

Day 4



Meeting with artists from Bieszczady

Breakfast at the hotel. Drive towards Smolnik. Stop at the Gallery - Pracownia "Stare Kino" - a year-round meeting place with Bieszczady artists and their products, run by an enthusiast. Possibility to buy original Bieszczady handicrafts.

Lutowiska 7, Lutowiska

starekino@interia.pl

<https://www.facebook.com/starekinobieszczady>

Monday 10 a.m. - 4 p.m.

Tuesday 10: 00-16: 00

Wednesday 10: 00-16: 00

Thursday 10 a.m. - 4 p.m.

Friday 10: 00-16: 00

Saturday 10 a.m. - 4 p.m.

Sunday Closed

GPS: 49.2522197, 22.6934212



Gallery - Old Cinema Studio

Products



Visiting the Boyko church in Smolnik

Visiting the UNESCO Boyko Church - typical of the Boyko region. Today it is the only preserved object of this type in the Bieszczady Mountains and one of three in the whole country (38-713 Smolnik), approx. 1 hour.



Orthodox church of St. Michael the Archangel in Smolnik

What to see?

Smolnik, Smolnik

parafialutowiska@o2.pl

www.parafia-lutowiska.webd.pl

Saturday 10 a.m. - 5 p.m.
Sunday 08:30 - 17:00
GPS: 49.2096297, 22.6877369



Purchase of goat's cheese

Purchase of goat cheeses from the Bieszczadzka Koza Farm - traditional Boyko cheeses with wild garlic and black cumin (Wielka Bieszczadzka 25, 38-713 Smolnik).



The Bieszczadzka Goat farm

Products

Smolnik 25, Smolnik

<https://www.facebook.com/bieszczadzkakoza/>

Sunday 08:00 - 18:00
Monday 09:00 - 18:00
Tuesday 08:00 - 18:00
Wednesday 08:00 - 18:00
Thursday 08:00 - 18:00
Friday 08:00 - 18:00
Saturday 08:00 - 18:00

GPS: 49.2115934, 22.6912428



Drive through Peszczyny



Open-air Charcoal Firing Museum

What to see?

Lutowiska, Lutowiska

24h / whole year
GPS: 49.1582648, 22.7162149



Drive through Stuposiany



Bison demonstration farm in Muczne

What to see?

Stuposiany 1A, Muczne

stuposiany@krosno.lasy.gov.pl

<https://stuposiany.krosno.lasy.gov.pl/>

Monday 09:00 - 19:00
Tuesday 09:00 - 19:00
Wednesday 09:00 - 19:00
Thursday 09:00 - 19:00
Friday 09:00 - 19:00
Saturday 09:00 - 19:00
Sunday 09:00 - 19:00
Admission is free

GPS: 49.1426311, 22.7142612



Visiting viewpoints

Drive through Brzegi Dolne, Wetlina and Dołżyca. On the way, visiting viewpoints. Optional stop at Bacówka in Brzegi Górne to buy sheep's cheese.

Brzegi Górne bacówka, Lutowska

<http://bacowka.ugu.pl/>



Shepherds sheep cheese

What to see?

during the grazing season, daily 8:00 am - 8:00 pm

GPS: 49.13511832310329, 22.573676261518344



Lunch in Cisna

Transfer to Cisna, lunch at the restaurant "Siekierezada" - known as a diner, referring to the cult novel by Edward Stachura of the same title. It has its own specific atmosphere and decor combining the features of tough Bieszczady lumberjacks and sensitive artists. You can try the original Bieszczady cuisine: garlic soup, Bieszczady pies, Boyko dumplings.

Cisna 92, Cisna

siekierezada@onet.pl

<http://www.siekierezada.pl/>

In the low tourist season:
Wednesday Closed
Thursday Closed
Friday 10: 00-22: 00
Saturday 10: 00-22: 00
Sunday 10 a.m. to 10 p.m.
Monday Closed
Tuesday Closed

GPS: 49.2099695, 22.3294329



Siekierezada

What to eat?



Visiting the Icon Studio in Cisna

A visit to the Icon Studio in Cisna, a story about icons and the possibility of buying them, approx. 1 hour.

Cisna 4, Cisna

pracownia.veraikon@wp.pl

<http://ikony.bieszczady.net.pl/>

GPS: 49.21466445401511, 22.334710932540908



Icon workshop in Cisna

Products



Visiting the church

Transfer to Łopienka. Walk to the former village of Bojków, to the Greek Catholic church. Visiting in agreement with the Carpathian Society. On the way there are charcoal furnaces (walk and sightseeing approx. 1 hour).

Łopienka, Cisna

<http://www.twojebieszczady.net/lopienka.php>

24h

GPS: 49.2584716, 22.36457



St. Martyrs of Paraskevia in Łopienka.

What to see?



Walk and Sightseeing



Charcoal kilns

What to see?

Cisna, Cisna

http://www.twojebieszczady.net/rozmaitosci/wypal_wegla.php

GPS: 49.2649201, 22.3778384



Accommodation

Accommodation in Oberża pod Kudłatym Aniołem (38-607 Cisna 130), which provides accommodation in the heart of the Bieszczady Mountains, in the quiet town of Cisna, offering cozy rooms close to mountain hiking trails. The restaurant serves regional dishes, as well as the so-called borderlands, e.g. fuczki, i.e. cabbage pancakes, Hutsul dumplings with sheep cheese, Bojkowski dumplings with buckwheat groats. Dinner, free time and overnight.



Tavern under a shaggy Angel

What to eat?

Cisna 130, Cisna

aniol.kudlaty@gmail.com

<https://kudlatyaniel.pl/>

Opening hours: the hotel is open 24 hours a day

Restaurant opening hours:

SUNDAY - THURSDAY:

12:00 - 21:00

FRIDAY SATURDAY:

12:00 - 21:00

GPS: 49.2145128, 22.3263554

Day 5



A visit to Nalewkarnia

Breakfast at the hotel. Drive through the former Lemko villages: Żubracze, Maniów, Wola Michowa. A visit to Nalewkarnia Bieszczadzkie Smaki - the first one in Podkarpacie, producing the traditional method of tinctures based on fruit and herbs from Bieszczady, with original names and unique taste (38-543 Wola Michowa 22), approx. 1 hour.

Smolnik 9, Komańcza

bieszczadzkie.smaki@gmail.com

www.bieszczadzkiessmaki.pl

daily 8:00 - 18:00
GPS: 49.254805, 22.1159009



Bieszczadzkie

Tastes

Products



Visiting Komańcza

Visiting Komańcza: the Orthodox Church of the Protection of the Mother of God, formerly Greek Catholic, is a reconstruction of the church from 1802, which burned down completely in 2006. It is worth listening to the stories about the fate of the Lemkos and their churches, which will be presented in an interesting way by the parish priest. Next to it, there is a historic belfry, housing a small gallery with Lemko handicrafts, approx. 1 hour.

Komańcza 216, Komańcza

<http://www.typo3.cerkiew.pl/index.php?id=2275>

GPS: 49.34022119999999, 22.0557079



Orthodox church of the Protection of the Mother of God in Komańcza

What to see?



Walk in the footsteps of Arkadiusz Andrejkow's murals and boards

A walk in the footsteps of murals and boards by Arkadiusz Andrejkow over Barbarka, commemorating the former inhabitants of these lands, approx.

Komańcza, Komańcza

www.andrejkow.pl

24h

GPS: 49.335140696124576, 22.06915100688477



Murals and boardboards by Arkadiusz Andrejkow Komancz

What to see?



Visiting the church in Turzańsk

Transfer to Turzańsk and visiting the Greek Catholic church of St. Nicholas (38-542 Rzepedź), about 1 hour

DW 892 km 29, Turzańsk

GPS: 49.369229, 22.128988



Greek Catholic Church of st. Michael the Archangel in Turzańsk.

What to see?



Dinner

Drive through Czystogarb to PrzedBieszczady farm. Lunch divided into 2 groups - some of them visit the church of St. Onuphrius in Wisłok Wielki, with a complete iconostasis and a mini-museum of church art in the tower. Optional tasting and the opportunity to buy local products at the Przedbieszczady Ecological Farm (32-543 Wisłok Wielki 40).

Wisłok Wielki 40, Komańcza

winiwant@interia.pl

<http://przedbieszczady.pl/>

24h / whole year

GPS: 49.3993399, 21.979686



PrzedBieszczady Eco-tourism farm Dinners Lodging Cheese

Products



Visiting the church.



Church of St. Onuphrius in Wisłok Wielki

What to see?

Wisłok Wielki 66, Wisłok Wielki

<https://parafia.com.pl/wislok-wielki>

In the week

.

6.00 p.m. (in winter, the mass is celebrated at 4.00 p.m.)

On Sunday and public holidays

.

12:00

GPS: 49.4098015, 21.9808346



Visiting the open-air museum

Transfer to Zyndranowa, visiting the Museum of Lemko Culture - an open-air museum presenting the life of the Lemkos, incl. from 1860. In the exhibition room you can see Lemko costumes and everyday items (38-454 Zyndranowa 1), approx. 1 hour.

Zyndranowa 1, Tylawa

muzeum@zyndranowa.org

www.zyndranowa.org

In 2021, the museum will be open all year round, every day except Mondays and the following days:
in the months of January - March from 10.00 to 16.00;
in the months of April - October from 10.00 to 16.00;
in the months of November - December from 10.00 to 16.00;
on Mondays, the museum is closed to visitors
GPS: 49.437978, 21.7121147



Museum of Lemko Culture in Zyndranowa.

What to see?



Accommodation

Check in at the Domenico Restaurant Hotel (Tylawa 28). Regional dinner at a restaurant located on the Podkarpackie Tastes Culinary Trail, free time, overnight.

Tylawa 28a, Tylawa

kontakt@domenico-tylawa.com

www.domenico-tylawa.com



Domenico Restaurant

What to eat?

Monday: 10:00 - 22:00
Tuesday: 10.00 a.m. - 10.00 p.m.
Wednesday: 10:00 - 22:00
Thursday: 10:00 - 22:00
Friday: 10:00 - 22:00
Saturday: 10:00 - 22:00
Sunday: 10:00 - 22:00

GPS: 49.4642029, 21.6962938

Day 6



Visit to the Organic Farm

Breakfast at the hotel. A visit to the "Figa" Family Ecological Farm. The grazing area of this farm is one of the cleanest places in Poland, thanks to which goat's milk and cheese have rich nutritional and health properties. Tasting and the possibility of buying goat dairy, including Lemko cheese (38-454 Mszana 44).

Mszana 44/2, Tylawa

info@serykozio.pl

serymaziejuk.pl

after telephone contact
GPS: 49.4836037, 21.6647983



Figa Family Ecological Farm Products



Visiting the Hermitage of St. John of Dukla

On the way, a short stop in the picturesquely situated Hermitage of St. John of Dukla, where the monk was to spend several years of his life in his youth. There is a wonderful spring nearby. Time for photos.

, Trzciana

24h
GPS: 49.5153872, 21.6760418



Hermitage of St. John of Dukla

What to see?



Visit and sightseeing in the Ethnocenter of the Krosno Region

A visit to the Ethnocenter of the Krosno Region in the former railway station building, which is an original combination of the Cultural Center, an ethnographic museum, an art studio, a shop with products of regional artists, an offer of workshops and concerts (Kolejowa 29a, 38-400 Krosno). Visiting the Center, folklore presentations, lunch of the Pogórzans' cuisine (catering), tasting local products, the possibility of buying regional Lemko and Pogórze handicrafts - approx. 4 hours.

Kolejowa 29 a, Krosno

biuro@etnocentrum.pl

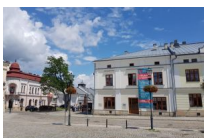
www.etnocentrum.pl

Tuesday-Thursday 9-17
Friday 9-19
Saturday 10-19
Sunday 10-18
GPS: 49.6943047, 21.7477872



The ethnocenter of the Krosno Region in Krosno

What to see?



Walk around Krosno

With free time, a guided walk around Krosno: Market Square, Portius tenement house, synagogue square, Franciscan monastery.

Rynek, Krosno

um@um.krosno.pl

www.krosno.pl

24h
GPS: 49.6935027, 21.7652947



Krosno Market Square

What to see?



Accommodation

Transfer to the Szkłane Lniane Hotel, dinner (ethno cuisine again), free time, overnight.

ul.Pelczara 156, Korczynna

info@szklanelniane.pl

www.szklanelniane.pl



Szkłane-Lniane restaurant and hotel complex

What to eat?

Monday: CLOSED
Tuesday - Friday: 2 p.m. - 10 p.m.
Saturday: 12:00 - 23:00
Sunday: 11:00 a.m. - 10:00 p.m.
GPS: 49.7366592, 21.8069393



A visit to the "Przadki" nature reserve

Breakfast at the hotel.
Transfer to the Przadki Rock Reserve (Pelczara 158, 38-420 Korczyna), about 30 minutes

DW991, Korczyna

<http://www.przadki.eu/>



24h

GPS: 49.74229709999999, 21.8006717

The nature reserve Przadki prof.

Henryk Swidziński

What to see?



Sightseeing of the Kamieniec castle

Kamieniec Castle
(Podzamcze B / N, 38-420 Korczyna), described in an outstanding work of Polish literature - "Zemście" by Aleksander Fredro, which colorfully tells the genesis of the conflict of two warring families. Visiting the ruins (approx. 1 hour).

Podzamcze, Korczyna

www.zamekkamieniec.iq.pl

We invite you every day: from April 16 to September 30, from 9:30 am - 6:30 pm. Outside the tourist season, the facility is not available for individual tourists due to difficult terrain conditions and conservation works carried out in the autumn and winter period.

GPS: 49.742613, 21.786661



Kamieniec Castle

What to see?



Visiting the Glass Heritage Center in Krosno

Arrival in Krosno, visiting the Glass Heritage Center (Blich 2, 38-400 Krosno), at 1.5 hours. Getting to know the history of the glass industry in the Carpathian Foothills and the importance of the development of industry for the folk culture of the Pogórzans, Dolinians and Lemkos. Live observation of glass production.

ul. Blich 2, Krosno

biuro@miastoszkl.pl

www.miastoszkl.pl

Monday - Saturday 9.00 a.m. - 5.00 p.m.

Sunday 11.00 a.m. - 5.00 p.m.

GPS: 49.6944899, 21.765802



Glass Heritage Center in Krosno

What to see?



Dinner

Lunch at the Oberża Restaurant (Feliksa Czajkowskiego 94, 38-400 Krosno): potato pancakes, the taste of traditional rural cuisine with a hint of industrial modernity.

ul. F. Czajkowskiego 94, Krosno

<https://www.facebook.com/oberzakrosno>

Monday 10:00 - 19:00

Tuesday 10:00 - 19:00

Wednesday 10:00 - 19:00

Thursday 10:00 - 19:00

Friday 10:00 - 19:00

Saturday 10:00 - 19:00

Sunday 10:00 - 19:00

GPS: 49.6883293, 21.7526762



Oberża Krosno

What to eat?



Visit to the vineyard

Transfer towards Jasło - the capital of wine growing in the Subcarpathian region in the Carpathian Foothills. A visit to the Dwa Granice Vineyard - one of the oldest and largest in Podkarpacie, producing white wines (including Muskat) and red wines (38-207 Przysieki 412). Presentation of the vineyard and wines, tasting, refreshments of local products and the possibility of purchasing, approx. 1 hour.



Two Granice Vineyard

Where to sleep?

Przysieki 412, Przysieki

winnicadwiegranice@gmail.com

www.winnicadwiegranice.pl

The store is open from Monday to Saturday from 12:00 to 17:00

Tastings - after making an appointment by phone or during the store's working hours

GPS: 49.738723, 21.385917



Accommodation

Transfer to Biecz - a historic city, "Pearls of Podkarpacie", "Little Krakow". Accommodation at the Villa Historia Hotel (Węgierska 13, 38-340 Biecz).



Villa History

Where to sleep?

ul. Węgierska 13, Biecz

pokoje@villahistoria.com

http://www.villahistoria.com/

Hotel night:

Check-in from 14:00 to 22:00

Check out until 12:00

GPS: 49.7298929, 21.2485367



Walk around the market square

As much time as possible, a short walk around the city with a guide: the parish church, the monastery complex, the synagogue, the town hall with a tower, Kromer's house, the Old Town district.



The Main Market Square in Biecz

What to see?

Rynek, Biecz

it.biecz@msit.malopolska.pl

24h

GPS: 49.73034699999999, 21.2501683



Dinner

Dinner at the U Becza restaurant and cafe, with regional cuisine referring to Krakow and Hungarian traditions and our own craft beer.

Return to the hotel, free time, overnight.



U Becza restaurant and cafe

What to eat?

Rynek 2, Biecz

restauracjaubecza@gmail.com

http://www.restauracjaubecza.pl

Monday 10:00 - 22:00

Tuesday 10:00 - 22:00

Wednesday 10:00 - 22:00

Thursday 10:00 - 22:00

Friday 10:00 - 22:00

Saturday 10:00 - 22:00

Sunday 10:00 - 22:00

GPS: 49.730118, 21.2491944



Visiting the ethnographic open-air museum

Breakfast at the hotel.
Trip to the Museum of Oil Industry and Ethnography in Libusza. It is a private ethnographic open-air museum, presenting mining machinery and equipment as well as everyday objects from the 19th and 20th centuries (38-306 Libusza 67), guided tours - approx. 1 hour.

Libusza 67, Libusza

libusza@onet.eu

<https://libusza.pl/muzeum/>

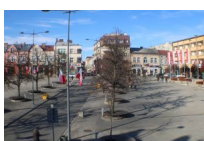
from 8.00 a.m. to 4.00 p.m.

GPS: 49.6912592, 21.2231827



Museum of Oil Industry and Ethnography in Libusza

What to see?



Visiting Gorlice

Transfer to Gorlice - a multicultural city in the Ropa valley, on the northern border of the Low Beskids. Walk around the city with a guide: Market Square, Dwór Karwacjanów, synagogue.

Rynek, Gorlice

um.@um.gorlice.pl

www.gorlice.pl

round the clock
GPS: 49.6546159, 21.1596321



Gorlice Market Square and Synagogue

What to see?



Visiting the PTTK Museum in Gorlice

Visiting the PTTK Regional Museum in Gorlice, presenting costumes, interior furnishings, sculptures, paintings and a model of the Gorlice battle from the First World War (Wąska 7, 38-300 Gorlice).

ul. Wąska 7-9, Gorlice

muzeum.pttk.gorlice@interia.pl

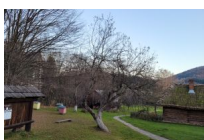
<http://www.pttkgorlice.pl/muzeum/o-muzeum/>

Tue - Fri 9:00 am - 4:00 pm
from April 1 to September 30
also Sat-Sun 10:00 - 15:00
GPS: 49.6567629, 21.1567909



Regional Museum of PTTK in Gorlice

What to see?



or

, Szymbark

skansen.szymbark@gmail.com

<https://muzeum.gorlice.pl/oddzialy-muzeum/skansen-wsi-pogorzanskiej>



Open-air museum of the Pogórzańska village for them. prof. Roman Reinfuss in Szymbark.

What to see?

Monday 9 a.m. - 3 p.m.
Tuesday 9:00 a.m. - 3:00 p.m.
Wednesday 9:00 am - 3:00 pm
Friday 9:00 am - 3:00 pm
Thursday 9:00 am - 3:00 pm
Saturday 9:00 a.m. - 3:00 p.m.
Sunday 9 a.m. to 3 p.m.

GPS: 49.6223663, 21.094785



or



Open-air museum of the oil industry Magdalena

What to see?

ul. Lipowa 38, Gorlice

k.dudek1@o2.pl

<http://www.skansenmagdalena.cba.pl/>

May - September: Monday - Friday 9:00 a.m. - 2:00 p.m. and 4:00 p.m. - 7:00 p.m., Saturday 9:00 a.m. - 2:00 p.m.
Sunday - after prior arrangement by phone
October - April: the open-air museum can be visited after prior arrangement by phone, tel. + 48 600 491 470
GPS: 49.6543423, 21.1351659



or



Zagroda Maziarska

What to see?

Łosie 34, Ropa

zagroda.maziarska@gmail.com

www.muzeum.gorlice.pl

pn-pt 9.00 - 17.00

sb-nd 9.00 - 15.00

GPS: 49.571079, 21.0891959



Dinner

Lunch at the Stara Chata
Restaurant (38-311
Szymbark 285).



Stara Chata Restaurant

What to eat?

Szymbark 285, Szymbark

GPS: 49.62131609999999, 21.0947169



Visiting the church

Transfer to Sękowa, visiting
the UNESCO Church of
Saints James and Philip
from 1520, one of the most
valuable wooden churches
in Poland (38-307 Sękowa
13), approx. 1 hour.



Church of Saints Jakub and Filip in Sękowa

What to see?

Sękowa 13, Sękowa

<http://www.sekowa.rzeszow.opoka.org.pl/>

Weekdays:

7:00, 18:00 (17:00)

Sunday:

7:00, 9:00, 10:30, 16:00

GPS: 49.6306189, 21.1860814



Accommodation

Drive in front of the Lemko
region. On the way: Ropica
Górna, Małastów.
Accommodation in
Regietów at the Hotel
Jaśmin. It is part of the
Gładyszów Hucul Horse
Stud complex,
picturesquely situated, with
a panorama of the Beskid
Niski (38-315 Regietów 28).



Hotel Jaśmin Regietów

Where to sleep?

Stadnina koni huculskich w Regietowie, Regietów

hoteljasmin@kombinatkietrz.pl

www.huculy.com.pl

24h
GPS: 49.4815554, 21.2171585



Visiting the stud

Visiting the Hucul Horse Stud.



Hucul horse stud in Regietów

Products

Regietów 28, Regietów

sekretariatstadrina@kombinatkietrz.pl

www.huculy.com.pl

GPS: 49.48221849999999, 21.2172282



Dinner

Dinner at the Huculanka Regional Inn (38-315 Regietów), consisting of Lemko dishes, free time, overnight.



Huculanka regional inn

What to eat?

Regietów 28, Uście Gorlickie

karczmaHuculanka@kombinatkietrz.pl

www.huculy.com.pl

GPS: 49.4821359, 21.2179465

Day 9



Drive along the trail of Lemko churches

Early breakfast at the hotel. Travel along the trail of Lemko churches (approx. 1 hour)



The old church of St. Michael the Archangel in Regietów

What to see?

Regietów 25, Uście Gorlickie

ksjaroslawgrycz@gmail.com

the building is closed, under the management of the Orthodox parish in Gładyszów
GPS: 49.4794923, 21.2169363



and



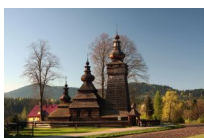
Orthodox church of St. Kosma and Damian in Skwirtno

What to see?

Skwirtne 18, Uście Gorlickie

www.parafiauscie.pl

Sunday:
9:00 (every two weeks)
GPS: 49.48772899999999, 20.9879761



and



St. Paraskeva in Kwiatów.

What to see?

Uście Gorlickie 88, Uście Gorlickie

www.parafiauscie.pl

Monday - Tuesday - telephone service: 18 351 61 87 or 660 105 342
Wednesday: 9.00 a.m. - until dusk, with a break 1.00 p.m. - 1.30 p.m.
Thursday - Saturday: 9.00 a.m. - until dusk, with a break 1.00 p.m. - 1.30 p.m.
Due to services from 01.10. until 07/11. closing at 17.00
GPS: 49.5008583, 21.1736056



and



St. Michael the Archangel in Brunary.

What to see?

Brunary 45, Uście Gorlickie

parafia@brunary.pl

<http://parafia.brunary.pl/cerkiew-brunary/>

The church can be visited all year round.

During the tourist season:

May, June, July, August, September, October

on Wednesdays from 9.00 a.m. to 5.00 p.m.

on Thursday, Friday, Saturday from 9.00 to 18.00

on Sundays and public holidays from 12.00 to 17.00

Outside the tourist season:

November, December, January, February, March, April

The church is opened at the request of visitors and by prior arrangement by phone or e-mail.

Contact presbytery - 18/351 67 76 Guide Mrs. Patrycja Bochenek - tel. 536 723 418

e-mail: parafia@brunary.pl

GPS: 49.5340125, 21.0325718



and



Piorunka - wooden church. st. Kosma and Damian

What to see?

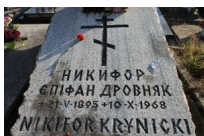
Czyrna 37, Czyrna

<http://www.drewniana.malopolska.pl/?page=obiekty&id=144>

Possibility of visiting after services Sunday and holidays:

9:30 am

GPS: 49.4919446, 21.191089



A visit to the Lemko cemetery

Arrival to Krynica-Zdrój. A

visit to the Lemko

cemetery, visiting the tomb

of Nikifor Krynicky.

św. Włodzimierza 7, Krynica Zdrój

24h

GPS: 49.4075907, 20.9516898



Nikifor tomb

What to see?



A visit to the Park of miniatures

Visiting the Miniature

Wooden Architecture Park,

presenting miniatures of

wooden architecture in

Beskid Sądecki.

ul. Św. Włodzimierza 3, Krynica Zdrój

<https://krynica.pl/Park-miniatur-architektury-drewnianej-Beskidu>

24h

GPS: 49.40815389999999, 20.9491685



Open-air museum of wooden architecture miniatures

What to see?



and



Orthodox church Saint Equal to the Apostles of Prince Vladimir the Great

What to see?

ul. Św Włodzimierza 3, Krynica Zdrój

kspiotr1@op.pl

<https://cerkiew-krynica.ns24.net/>

GPS: 49.408156, 20.949175



Visiting the Nikifor Museum

Visiting the Nikifor Museum at Willa Romanówka - the most famous Lemko artist, primitivist. In the museum, you can see all the periods of his work, as well as personal items, including a workshop, approx. 1.5 hours.



Nikifor Museum

What to see?

Bulwary Dietla 19, Krynica Zdrój

muzeum_krynica@muzeum.sacz.pl

https://muzeum.sacz.pl/strony_filie/muzeum-nikifora

Tuesday - Saturday

10.00 a.m. - 1.00 p.m.

14.00 - 17.00

last entry to the exhibition at 16.30

Sunday

10.00 a.m. - 3.00 p.m.

last entry to the exhibition at 14.30

The Nikifor Museum is closed on Mondays, after holidays, the first and second days of Easter, Corpus Christi and January 1, January 6, November 1, 25 and 26 December.

GPS: 49.4185293, 20.9560971



Dinner

Lunch at the Karczma Lemko Kłynec, serving original Lemko dishes. It is an integral part of the artNikifor facility. In an extremely atmospheric interior, made of 150-year-old logs from the demolition of Lemko houses, there are many original props associated with a traditional Lemko village, as well as a gallery of sculptures and icons. You can order a variant with dumplings, as well as a rice soup with noodles. The guests are served by waiters and waitresses in Lemko costumes (Profesora Henryka Świdzińskiego 20, 33-380 Krynica-Zdrój).



The Lemko inn

Kłynec

What to eat?

ul. Prof. Henryka Świdzińskiego 20, Krynica Zdrój

karczma@nikifor.pl

<http://karczmalemkowska.pl>

Monday 1:00 p.m. - 10:00 p.m.

Tuesday 1:00 p.m. - 10:00 p.m.

Wednesday 1:00 p.m. - 10:00 p.m.

Thursday 12:00 p.m. - 10:00 p.m.

Friday 12:00 p.m. - 10:00 p.m.

Saturday 12:00 p.m. - 10:00 p.m.

Sunday 12:00 p.m. - 10:00 p.m.

GPS: 49.42425919999999, 20.9646962



Visiting the church

Drive towards Muszyna.
On the way there is the church of St. Jakub the Younger Apostle in Powroźnik - one of the oldest and most beautiful Greek Catholic churches (33-370 Powroźnik).
Sightseeing and lecture by P. Kęcki, approx. 1 hour.



Orthodox church st. Jakub the Younger Apostle in Powroźnik.

What to see?

DW971 28, Powroźnik

powroznik@diecezja.tarnow.pl

<http://parafiapowroznik.pl>

Visiting hours:

from April 1 to September 30
Monday - only group tours upon prior arrangement
Tuesday, Wednesday from 9:00 am to 5:00 pm
from Thursday to Saturday from 9:00 to 18:00
Sunday from 12:00 to 17:00
from Tuesday to Saturday lunch break from 1:00 p.m. to 1:30 p.m.

October

Monday and Tuesday - only group tours upon prior arrangement
Wednesday from 9:00 a.m. to 5:00 p.m.
from Thursday to Saturday from 9:00 to 18:00
Sunday from 12:00 to 17:00
from Tuesday to Saturday lunch break from 1:00 p.m. to 1:30 p.m.

from November 1 to March 31

Monday and Tuesday - only group tours upon prior arrangement
from Wednesday to Saturday from 10:00 to 16:00
Sunday from 11:00 a.m. to 4:00 p.m.
lunch break from 1 p.m. to 2 p.m.
November 1 - closed on November 2 from 11:00 to 15:00

during the Christmas period

December 24 (Christmas Eve) - from 12:00 to 15:00
December 25 Christmas - closed
December 26 Second Day of Christmas - closed
January 1, New Year's Day - closed
January 6, Epiphany - closed

During the Easter season

Holy Thursday from 9:00 am to 3:00 pm
Good Friday, Easter Saturday - closed
Resurrection Sunday - closed
Easter Monday from 12:00 to 16:00

May weekend

May 1 - from 9:00 a.m. to 5:00 p.m. from 1:00 p.m. to 1:30 p.m. lunch break
May 3 - from 12:00 to 17:00

Corpus Christi and August 15

From 12:00 to 17:00
Walking is free
from November 1 to March 31
Monday and Tuesday - only group tours upon prior arrangement
from Wednesday to Saturday from 10:00 to 16:00
Sunday from 11:00 a.m. to 4:00 p.m.
lunch break from 1 p.m. to 2 p.m.
November 1 - closed on November 2 from 11:00 to 15:00

during the Christmas period

December 24 (Christmas Eve) - from 12:00 to 15:00
December 25 Christmas - closed
December 26 Second Day of Christmas - closed
January 1, New Year's Day - closed
January 6, Epiphany - closed

During the Easter season

Holy Thursday from 9:00 am to 3:00 pm
Good Friday, Easter Saturday - closed
Resurrection Sunday - closed
Easter Monday from 12:00 to 16:00

May weekend

May 1 - from 9:00 a.m. to 5:00 p.m. from 1:00 p.m. to 1:30 p.m. lunch break
May 3 - from 12:00 to 17:00

Corpus Christi and August 15

From 12:00 to 17:00
Walking is free
GPS: 49.3696026, 20.950348



Visiting the open-air museum of Spiš folk architecture

Drive along the picturesque route on the Poprad River through Žegiestów to the Polish-Slovak border in Łomnica, and then to Stara Ľubovňa (alternatively, a shorter route through Leluchów).

Visiting the open-air museum of Spiš folk architecture. In the open-air museum there are sacred buildings (Greek Catholic church), residential houses, farm buildings and workshops (forge, mill, carpentry workshop), as well as a school building, approx. 1 hour. (Zámocká, 064 01 Stará Ľubovňa).

Zámocká 22, Stará Ľubovňa

skanzen@hradlubovna.sk

www.hradlubovna.sk

IV. 9.00 a.m. - 4.00 p.m.

May - September 9.00 a.m. - 7.00 p.m.

October - 9.00. - 17.00

XI - III. Closed (only open for groups > 30 people upon agreement)

GPS: 49.3153391, 20.699089



Stara Lubovna open-air museum

What to see?



or

Visiting the Castle in Stara Ľubovna.



Castle in Ľubovňa

What to see?

ul. Zamocka 769, Stara Lubovna

hrad@hradlubovna.sk

www.hradlubovna.sk

May - September 9.00 - 19.00

X Tue - Sun 9.00 - 16.00

XI - II Wed-Sun 10.00 - 15.00

III Wed - Sun 10.00 - 15.00

IV Tue - Sun 10.00 - 18.00

GPS: 49.3153306, 20.6993905



Accommodation

Transfer for the night to the village of Červený Kláštor (Red Monastery).

On the way there are traditional villages, each inhabited by a different ethnic group (Ruthenians, Germans, Roma) and Kúpele Červený Kláštor Smerdžonka - one of the smallest Slovak spas, based on healing water, known from the 14th century (147, 059 06 Červený Kláštor-Červený Kláštor - kúpele).

Accommodation in Penzion Pltník (059 06 Červený Kláštor).

Czerwony Klasztor Penzion Pltnik, Czerwony Klasztor

info@penzionpltnik.sk

http://www.penzionpltnik.sk/

24h

GPS: 49.3908272, 20.3984604



Pension Pltník

Where to sleep?



Dinner

Kolacja w Goralská restaurace Červený Kláštor - location with kitchen (bryndza dumplings, goral pies) and original equipment, with views of Trzy Korony (Červený Kláštor 61, 059 06 Červený Kláštor).



Czerwony Klasztor Highlander Restaurant

What to eat?

Czerwony Klasztor 61, Czerwony Klasztor

info@pltnici.sk

<https://pltnici.eu/>

daily from 8:00 to 22:00
GPS: 49.3918554, 20.4058769

Day 10



Rafting on the Dunajec River

Breakfast at the guesthouse.
Rafting down the Dunajec River along the route used by Pieniny highlanders to float wood to the Baltic Sea (rafts, rafting), or a bicycle trip along the Dunajec River (Červený Kláštor 86, 059 06 Červený Kláštor, approx. 2.5 hours).



A rafting trip down the Dunajec River gorge in Cervený Klastor

Products

Czerwony Klasztor 27, Cervený Klastor

info@pltnici.sk

<http://www.pltnici.sk/>

April 30 - October 1 from 8:00 am - 5:00 pm
GPS: 49.8450129, 20.7116303



or

Visiting the Monastery Museum - the former Carthusian monastery, famous for producing herbs and originally red brick, from which it is named.
Visiting and listening to the legend of the Monk Cyprian (Under the lime trees 20, 059 06 Červený Kláštor), approx. 1.5 hours.

A walk along the Dunajec River, time for photos, purchase of regional products and crossing the footbridge connecting Poland and Slovakia.

Pod lipami 20, Červený Kláštor

info@muzeumcervenyklastor.sk

www.muzeumcervenyklastor.sk/

The museum exhibition is available during the museum's opening hours.
January, February, November, December
time. 9.00 a.m. - 4.00 p.m., last admission to the museum at 15.00
March, April, September, October
time. 9.00 a.m. - 5.00 p.m., last admission to the museum at 4.00 p.m.
May June July August
time. 8.00 a.m. - 7.30 p.m., last admission to the museum is possible at 6.30 p.m.

GPS: 49.3917746, 20.4053151



Monastery Museum

What to see?



Lunch at the Red Monastery

Lunch in the classical Karczma (Křma Pod lipami, 543, 059 06 Červený Kláštor).



Karczma Pod Lipami - Czerwony Klasztor

What to eat?

Czerwony Klasztor, Pod Lipami 20, Czerwony Klasztor

info@muzeumcervenyclastor.sk

<https://muzeumcervenyclastor.sk/aktualna-ponuka/obcerstvenie-taverna-pod-lipami/>

9:00 – 19:00
GPS: 49.3990403, 20.4160802



Visiting the village of Osturňa

Drive along a picturesque mountain route with a view of the peaks of the Tatra Mountains, stop at viewpoints. On the way, villages: Spišská Stará Ves, Matiašovce, Spišské Hanušovce, Veľká Franková, Osturňa - a Ruthenian village with wooden buildings - a living open-air museum of folk architecture, where the inhabitants speak a dialect difficult to understand for Slovaks, stop at viewpoints (approx.).

Urząd Gminy Osturňa, Osturňa 153, Osturňa

obecosturna@neton.sk

<http://www.obec-osturna.sk/>

GPS: 49.33417705915001, 20.233759676660153



Osturňa

What to see?



Visiting the museum in Zdiar

Arrival in the village of Zdiar. Visiting the Múzeum - Ždiarsky Dom - an ethnographic exhibition presenting the highlander folk culture of Zamaguria. Participation in the staging of a highlander wedding. Possibility to purchase original highlander costumes and accessories.

Ždiar 260, Ždiar

gorali.zdiar@gmail.com

www.gorali.zdiar.eu

Monday - Saturday: from 10:00 to 16:00
Sunday: from 1 p.m. to 5 p.m.
GPS: 49.2707449, 20.2647227



Museum of the Zdziarski House.

What to see?



Dinner and overnight in Zdiar

Dinner at the Ždiarsky Dom restaurant, a traditional Slovak restaurant, decorated in highlander style, with regional Zamaguria cuisine (including excellent sheep cheese soup) and mountain views.

Transfer for the night to Penzión Ždiaranka (Ždiar 666, 059 55 Ždiar).

Pensjonat Ždiaranka Ždiar No. 666, Zdiar

penzion@zdiaranka.sk

<http://www.zdiaranka.sk/>

round the clock
GPS: 49.2761832, 20.2376581



Zdiaranka Guest House

What to eat?

Day 11



A short visit to a mountain products farm

Breakfast at the guesthouse.

A visit to the farm of mountain products - handicrafts and natural cosmetics inspired by the nature of the Belianske Tatras.

The apiary and the farm are located at an altitude of 1000 m above sea level

Antošovský vrch 679, Zdiar

stastnavcela@gmail.com

www.ustastnejvcely.sk

Monday - Saturday 8.00 - 19.00

GPS: 49.2695769, 20.2903861



U šťastnej včely

Products



Gondola ride to the top.

Transfer to the village of Bachledova dolina, ride to the top by gondola lift.

BACHLEDKA Ski & Sun Bachledova dolina 702, Zdiar

info@bachledka.sk

<https://bachledka.sk/>



Bachledka Ski & Sun

What to see?

June: 9:00 am - 5:00 pm

July - August: 9:00 a.m. - 6:00 p.m.

September: 9 a.m. - 5 p.m.

October - May: 9:00 a.m. - 4:00 p.m.

GPS: 49.2720045, 20.3099199



Spacer

Walk along the footpath "Korunami Stromov", entrance to the observation tower. Admiring the panorama of the mountains (Tatra, Pieniny, Beskidy), approx. 2 hours

Zdiar Bachledova Dolina, Zdiar

info@chodnikkorunamistromov.sk

<https://chodnikkorunamistromov.sk/>



A path in the treetops of Bachledova Dolina

What to see?

June 9:00 am - 5:00 pm

July-August 9: 00-18: 00

September 9: 00-17: 00

October-May 9: 00-16: 00

GPS: 49.28580299999999, 20.3124366



Lunch in Hniezdne

In the vicinity of Poprad there are places: Spišská Belá (located by Romów), Bušovce (German settlements), Podhorany, Toperec, Podolíneč, Nižné Ružbachy, Forbasy (pass about 1 hour).
Lunch at Nestville Taberna (Hniezdne 420, 065 01 Hniezdne).



Nestville Taberna

What to eat?

Hniezdne 420, Hniezdne

events@taberna.sk

www.nestvilletaberna.sk

daily **11.00 a.m. - 9.00 p.m.**

GPS: 49.3013421, 20.6412309



Nestville Park

Visiting Nestville Park - a whiskey distillery referring to the tradition, with an ethnographic exhibition, own brewery, chocolate bar and a shop with regional products (Hniezdne 471), approx. 2 hours, possibly chocolate tasting, horse recreation for those not interested, whiskey tasting, free time, the possibility of shopping.



Nestville Park

What to see?

Hniezdne 471, Stara Lubovna

info@nestville.sk

www.nestvillepark.sk

Tue - Sat 9.00 - 17.00
in winter
10.00 a.m. - 4.00 p.m.
Sun 9.00 - 18.00

GPS: 49.3012428, 20.6393738



Walk around the spa

Transfer to Bardejov, walk around the Bardejovské Kúpele spa - one of the most beautiful Slovak spas, known for the stay of Sisi, the Austrian empress, staying here for treatment.



Bardejov Baths - Bardejów Zdrój

What to see?

Bardejovske Kupele, Bardejov

rezervacie@kupele-bj.sk

www.kupele-bj.sk

GPS: 49.32598000000001, 21.2772199



Accommodation

Accommodation at Hotel Alexander (086 31 Bardejov-Bardejovské Kúpele).
Dinner at the hotel or free time, overnight.



Hotel Alexander

Where to sleep?

Bardejovske Kupele, Bardejovske Kupele

hotelalexander@kupele-bj.sk

www.kupele-bj.sk

24h
GPS: 49.3285537, 21.2737122



Sightseeing

Breakfast at the Hotel.
In the morning: visit to the open-air museum Múzeum ľudovej Architektúra.



Open-air museum and museum of folk architecture - Saris Museum Bardejov.

What to see?

Bardejovské Kúpele 2031, Bardejov

www.muzeumbardejov.sk/expozic/skanzen.htm

Tuesday - Sunday: open

- Mondays: only open to pre-registered groups

- public holidays in the summer tourist season (May - September): open

- public holidays in the winter season (October - April): closed

In the summer season (1.5. - 30.09.): Tuesday - Sunday 10.00 - 12.30, 13.00 - 18.00

In the winter tourist season (1 October - 30 April): Tuesday - Sunday 9.30am - 12.30pm, 1pm - 3pm

GPS: 49.2911872, 21.275385



or

recreation in the spa town of Bardejovské Kúpele, approx. 2 hours



Bardejov Baths - Bardejov Zdrój

What to see?

Bardejovske Kupele, Bardejov

rezervacie@kupele-bj.sk

www.kupele-bj.sk

GPS: 49.32598000000001, 21.2772199



Sightseeing

Visiting one of the oldest Slovak towns: Market Square, Town Hall, Executioner's House, city walls, St. Idzi (about 1 hour). The spacious market square, which houses 46 colorful, historic tenement houses rich in ornaments, wall paintings and shutters, makes an impression.



Bardejov - Rynek

What to see?

Rynek, Bardejov

info@bardejov.sk

www.bardejov.sk

24h

GPS: 49.297179, 21.2821129



Lunch in Bardejov

Lunch in Stodola - regional dishes.



Stodola

What to eat?

ul. Duklianska 38, Bardejov

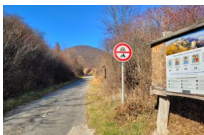
info.stodola@gmail.com

pn-pt 10.00 - 20.00

sb 12.00 - 20.00

nd 12.00-19.00

GPS: 49.31428, 21.2942468



Visiting the castle in Šariš

Drive past the castle Šariš Castle - the ruins of a medieval castle that gave the name of the region, with a view of Prešov and its surroundings. If free time, drive up to the castle, view the panorama (082 21 Veľký Šariš,)



Szarisz Castle (Saris)

What to see?

Hrad Saris, Velky Saris

hradsaris@velkysaris.sk

<https://www.velkysaris.sk/historia-pamiatky-a-osobnosti.phtml?id3=153386>

from May to September, daily from 10:00 to 17:00 (except Mondays)

GPS: 49.0535202, 21.1752799



Visiting a local brewery.

Visiting the company store of the Šariš brewery,



Saris Brewery

What to see?

Pivovarska 9, Velky Saris

<http://www.saris.sk/>

GPS: 49.04396610000001, 21.2087403



Visiting a museum

Arrival in Prešov. Visiting the National Museum - the most important museum on the ethnographic route of the region, with a rich exhibition presenting rural life in the Carpathians (Hlavná 2985/86, 080 01 Prešov), approx. 2 hours
A guided walk through the city connecting in a unique way the cultural conglomerate of Slovaks, Poles, Ukrainians and Lemkos - the capital of the region (St. Nicholas' Co-Cathedral, Synagogue).



Regional Museum in Prešov

What to see?

ul. Hlavna 67, Presov

muzeum@tripolitana.sk

<https://tripolitana.sk/>

SUMMER SEASON / JULY - AUGUST

Monday - Friday 9:00 am - 6:00 pm

Saturday 14:00 - 18:00

Sunday 14:00 - 18:00

Also open on public holidays: 2 p.m. - 6 p.m. (valid only in the summer season)

OFF SEASON

Monday - Friday 9:00 am - 5:00 pm

Saturday closed

Sunday 14:00 - 18:00

GPS: 48.9874732, 21.2487873



Accommodation

Accommodation at the Carpe Diem Hotel in the Market Square.



Hotel Carpe Diem

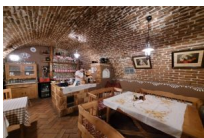
Where to sleep?

ul. Jarkova 40, Presov

recepia@hotelcarpediem.sk

www.hotelcarpediem.sk

Hotel day: 14: 00-10: 00
the reception is open 24 hours a day
GPS: 48.9985881, 21.2391101



Dinner in Presov

Dinner at Šarišská Chiža. Return to the hotel, overnight.



Sarisska Chiza

What to eat?

ul Hlavna 67, Presov

info@sarisska-chiza.sk

<https://www.sarisska-chiza.sk/>

GPS: 48.99693629999999, 21.240319



Sightseeing

Breakfast at the Hotel
Departure to Solivar - a historic complex of buildings (the oldest one comes from the second half of the 16th century).
Visiting the former salt mine and learning about the history of salt mining - Slovenské technické múzeum - Múzeum Solivar, approx. 2 hours.



Solivar Museum.

What to see?

Námestie osloboditeľov 4, Prešov-Solivar

muzeum.solivar@stm-ke.sk

www.muzeumsolivar.sk

Opening hours:

Summer season (April-October)

Tuesday - Saturday: 9.00 a.m. - 5.00 p.m.

Visiting the area with a speaker:

9.00 a.m., 10.30 a.m., 12.30 p.m., 2 p.m., 3.30 p.m.

S Winter season (November-March)

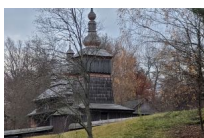
Tuesday - Saturday: 8.00 a.m. - 4.00 p.m.

Visiting the area with a speaker:

8.00, 9.00, 10.30, 12.30, 14.00

(visiting the museum complex takes about 90 minutes, the maximum number of visitors per entrance: 45)

GPS: 48.9792756, 21.2755346



Sightseeing

Transfer to Svidnik. Visiting the Museum of Ukrainian Culture.



Skanzen SNM - Museums of Ukrainian Culture - Svidnik

What to see?

Centralna 258, Svidnik

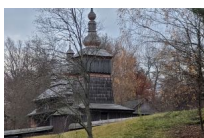
muzeum@muk.sk

www.muzeum.sk

wt - pt 8.30 - 16.00

sb-nd 10.00 - 16.00

GPS: 49.30598630000001, 21.5707111



or



Skanzen SNM - Museums of Ukrainian Culture - Svidnik

What to see?

Centralna 258, Svidnik

muzeum@muk.sk

www.muzeum.sk

wt - pt 8.30 - 16.00

sb-nd 10.00 - 16.00

GPS: 49.30423769999999, 21.5581935



or



Gallery Dezidera Millyho

What to see?

ul. Partizanska 45, Svidnik

muzeum@muk.sk

<https://www.snm.sk/?uvodna-stranka-millyho>

wt - pt 8.30 - 16.00

sb-nd 10.00 - 16.00

GPS: 49.3043284, 21.5791795



A visit to a honey farm

stop at the Včelia farma Okruhle honey farm - a certified and award-winning producer of Slovak honey, tasting and purchase of Carpathian honey.



Vcelia farm Okruhle

Products

Okruhle 84, Okruhle

boris.sabol@vcelyokruhle.sk

www.vcelyokruhle.sk

GPS: 49.1805972, 21.5562613



Sightseeing of Bodružal

Trip to Bodružal: visiting Lemko's fully equipped church of St. Nicholas from 1658 on the UNESCO list, approx. 1 hour



Church of St. Nicholas in Bodružal

What to see?

Bodružal, Krajna Polana

<https://slovakia.travel/pl/bodruzal-cerkiew-sw-mikolaja>

after agreeing by phone

Helena Kazimirova +421 54 759 3467 +421 908 665 578

GPS: 49.3524956, 21.7078526



Lunch in Nowa Kelcza

Lunch in Penzion - Reštaurácia Goral, situated on a hill overlooking Velka Domase - the most important recreational reservoir of the Horný Zemplín region. Regional Carpathian cuisine. As you have free time - an hour-long boat trip on the lake at the Zelená Lagúna Hotel.



Penzion - Restauracia Goral

Where to sleep?

Nowa Kelcza 118, Nowa Kelcza

penziongoral@centrum.sk

<https://www.penziongoral.sk/>

Monday - Sunday: 11:00 a.m. - 6:00 p.m.

GPS: 49.0505492, 21.7041152



Dinner in Humenne

Arrival in Humene, dinner at Pivovar U medveda - local brewery with many types of beer referring to the tradition of the Carpathians and regional cuisine.



Restauracia Pivovar U Medveda

What to eat?

ul Namesti Slobody 70, Humenne

pivovar@umedveda.sk

<http://www.umedveda.sk/>

Monday, Thursday 10:00 - 23:00

Friday, Saturday 11:00 am - 2:00 am

Sunday 11:00 a.m. - 10:00 p.m.

GPS: 48.9330868, 21.9118774



Overnight in Snina

Transfer to Snina, check-in at the BYSTRÁ hotel



Hotel Bystra

Where to sleep?

ul. Rybnicka 682, Snina

recepacia@hotelbystra.com

<https://hotelbystra.com/>

open 24 hours a day

Hotel day from 2 p.m. to 11 a.m. the next day

GPS: 48.9731737, 22.1904823



A night trip to the Astronomical Observatory

Night trip to the Astronomical Observatory on Kolonickom sedle, which is located in an area with a very low level of light pollution. This makes it an extremely suitable place for astronomical observations. Return to the hotel, overnight.

Ladomirov 176, Ladomirov

vh@astrokolonica.sk

<https://www.astrokolonica.sk/astronomicke-observatorium-na-kolonickom-sedle/>

Events only on request!
GPS: 48.935046, 22.2737414



Astronomical Observatory on Kolonický sedlo

What to see?

Day 14



Snina's birth

Breakfast at the hotel. Visiting Snina: Kaštieľ Snina. It is a restored palace from the end of the 18th century, now the City Library, a museum with a permanent exhibition, a gallery. Social events are also organized there and cultural ceremonies and classical music concerts.

Kpt. Nalepku 71/6, Snina

snina.kastiel@outlook.sk

www.kulturasnina.sk

Monday - Friday 8.00 - 11.00 and 12.00 - 15.00
GPS: 48.9849107, 22.1466028



Castle in Snina

What to see?



A visit to the Agritourism Farm

Transfer towards Poľoniny to the villages of Topoľa and Runina. Optionally, a visit to the Košiar oz Agritourism Farm, the owner of which is a regional enthusiast of cultural heritage, cherishing old folk traditions and sharing with visitors to the region. Tasting of home-made bread and other local products from Horne Zemplín: honey from Poľoniny, wolf syrups, cheese, approx. 1 hour.

Topoľa 69, Topoľa

kosiaroz@gmail.com

kosiar.webnode.sk

telephone and e-mail reservation
GPS: 49.04942699999999, 22.3554164



Košiar oz Products



Lunch in Snina

Lunch at Hotel Bystrá, above the natural pool Rybníky- Prírodné Biokúpalisko.

ul. Rybnická 682, Snina

recepacia@hotelbystra.com

<https://hotelbystra.com/>



Hotel Bystra

Where to sleep?

open 24 hours a day
Hotel day from 2 p.m. to 11 a.m. the next day

GPS: 48.9731737, 22.1904823



Visiting a museum

Transfer to the village of Zemplínske Hámre - picturesquely situated at the foot of Vichorlat, known for its iron-smelting in the 19th century. Visiting the Múzeum Zemplínske Hámre with exhibitions on industry and ethnography. Walk along the Hámorský náučný footpath, approx. 1 hour



Museum Zemplinske Hamre

What to see?

Kostolné námestie 3, Zemplínske Hámre

muzeum@zemplinskehamre.sk

<https://www.zemplinskehamre.sk/hnch/podstranka?id=4>

(from 04/07/2021 to 30/09/2022)

Monday: closed

Tuesday: 09:00 - 12:00, 13:00 - 16:00

Wednesday: 09:00 - 12:00, 13:00 - 16:00

Thursday: 09:00 - 12:00, 13:00 - 16:00

Friday: 09:00 - 12:00, 13:00 - 16:00

Saturday: closed

Sunday: 14:00 - 16:00

Visiting the museum exhibition takes about 45 minutes.

ENTRIES : 08:00; 09:00; 10:00; 11:00; 12:00; 13:00; 14:00;

ENTRIES Sundays and holidays: 14:00; 15:00

If you are interested in the tour, please ring the bell at the main entrance door.

We accept orders for tours outside of opening hours from Monday to Friday until 15:00.

Outside the above hours, admission is only possible for groups of more than 10 people, after prior arrangement by phone or e-mail. Such entrance is payable once: 6 € + entrance fee.

On public holidays, the museum is open as on Sundays.

GPS: 48.9501932, 22.1546522



Spacer

Walk along the Hámorský náučný footpath, approx. 1 hour Depending on the free time, a trip by off-road vehicles and a short ascent to the Jesenov Castle with a panoramic view of Humenné, mountain pastures and Vihorlat, approx. 1 hour. Transfer by coach to Košice. Departure by plane from Kosice.



Hamor educational sidewalk

What to see?

Kostolné námestie 3, Zemplínske Hámre

muzeum@zemplinskehamre.sk

<https://www.zemplinskehamre.sk/>

(from 01/10/2021 to 30/04/2022)

Monday: closed

Tuesday: 08:00 - 15:00

Wednesday: 08:00 - 15:00

Thursday: 08:00 - 15:00

Friday: 08:00 - 15:00

Saturday: closed

Sunday: closed

Visiting the museum exhibition takes about 45 minutes.

GPS: 48.9501932, 22.1546522